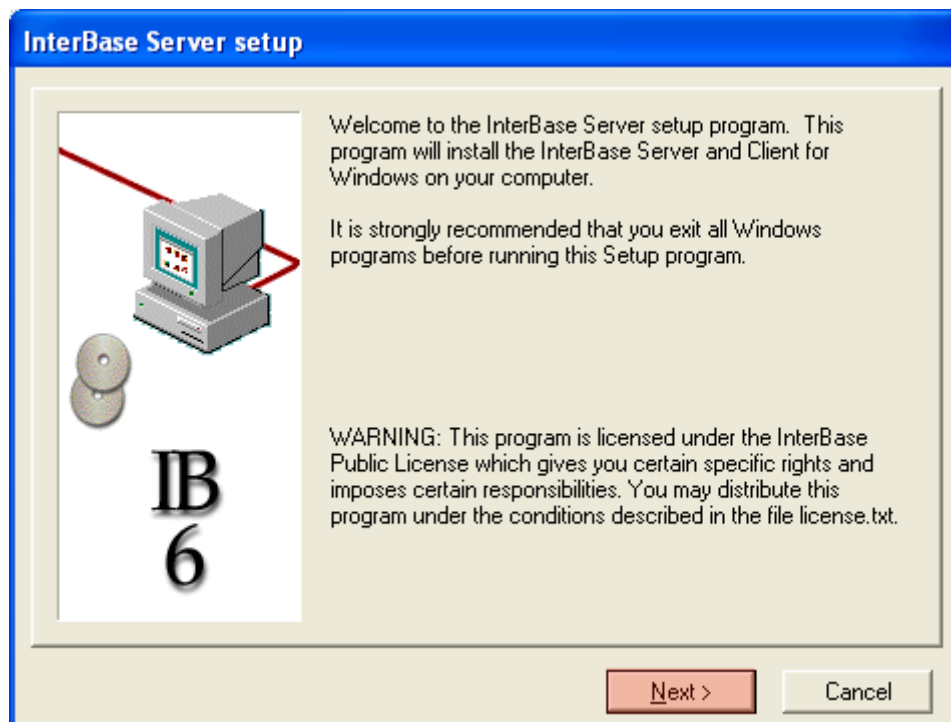
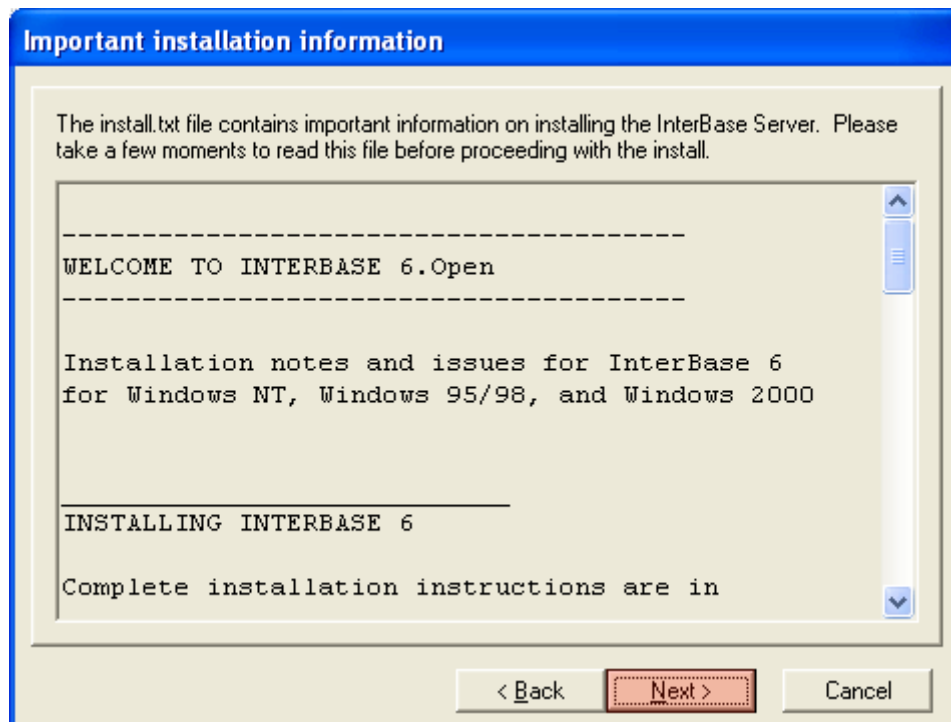


HOW TO SHARED DATABASE IN SDB 2008 (Service manual)

1. Download InterBase program: www.sdb20xx.com/sdb/interbase_server.zip
2. Install InterBase on the computer which will be host to the database sdb20xx.gdb. Follow the next steps.
3. Unzip **interbase_server.zip** file and run installation **setup.exe**.
4. You will see this window then click on the button **Next >**



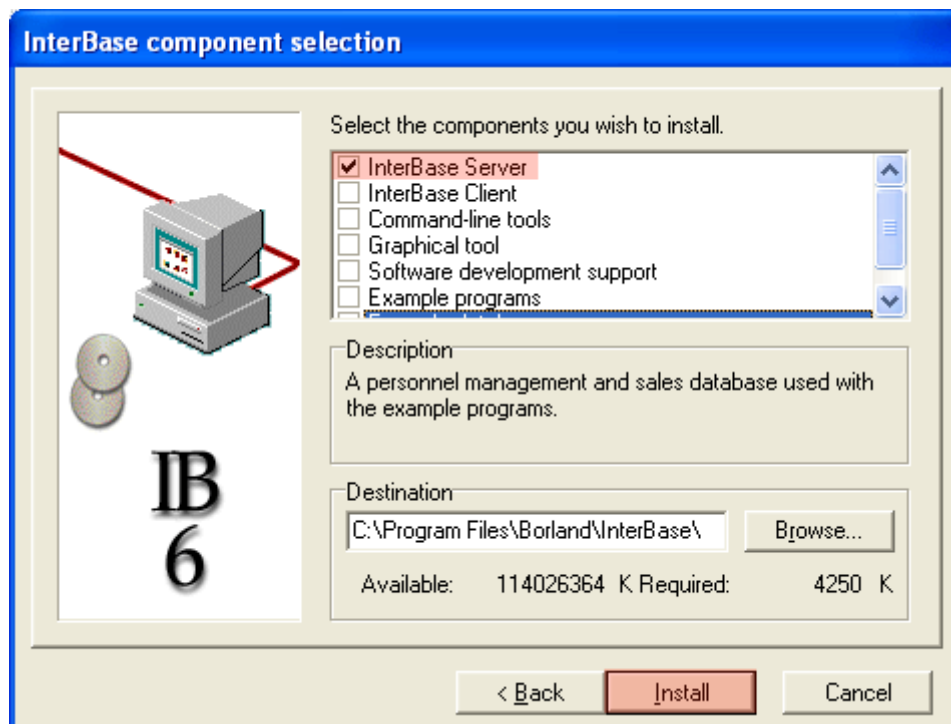
- Click on the **Next >** button



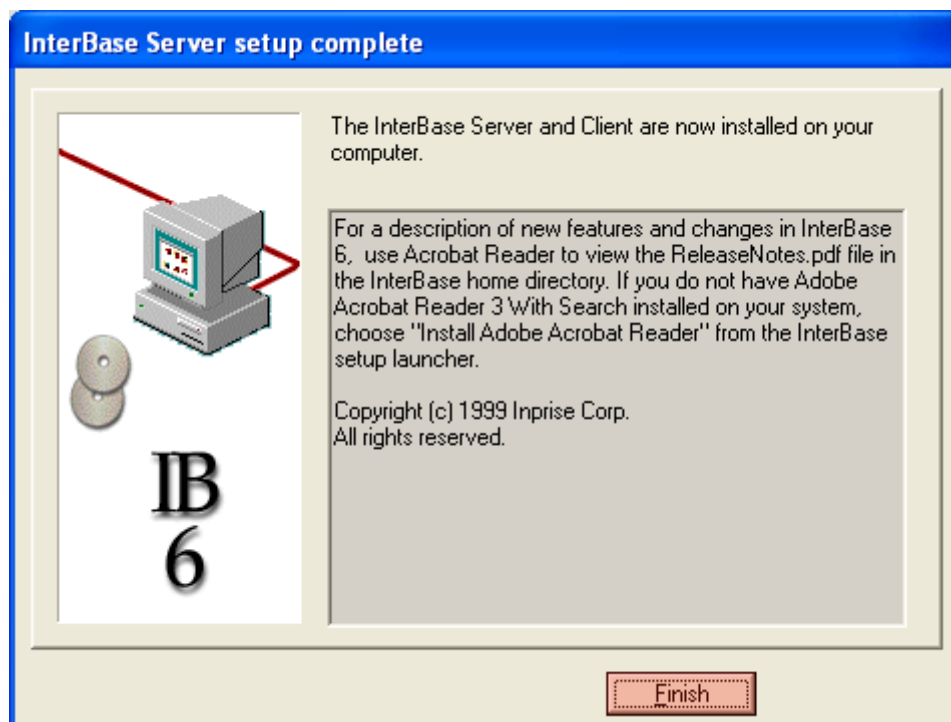
- Click on the **Yes** button on this window.



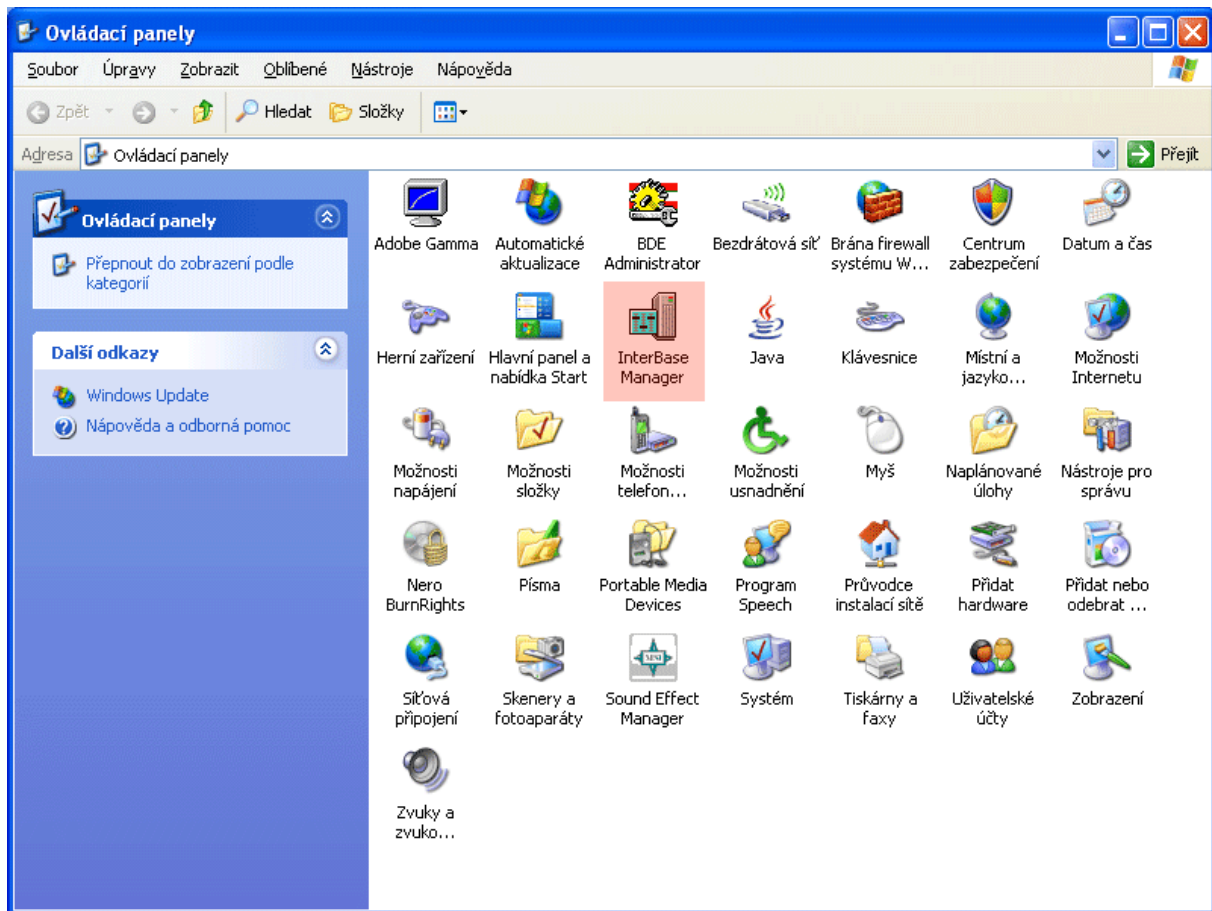
7. Check the box for InterBase Server. Leave the other boxes unchecked then click on the **Install** button



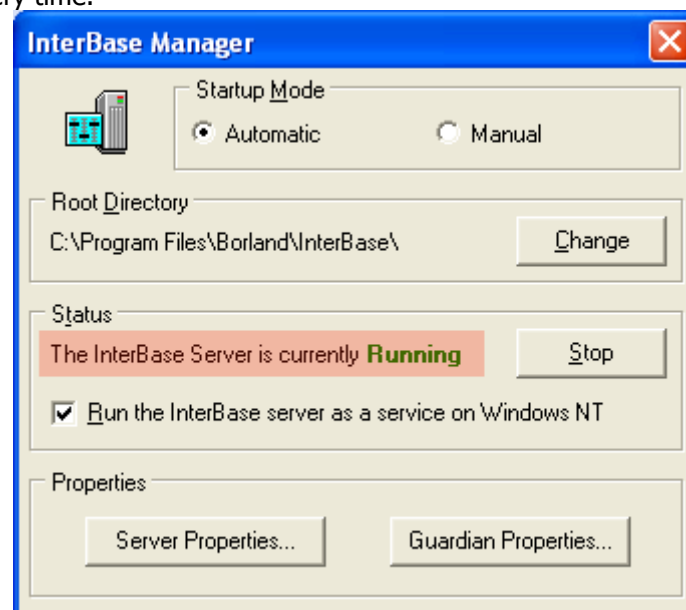
8. After the installation finished you will see this window – click **Finish**



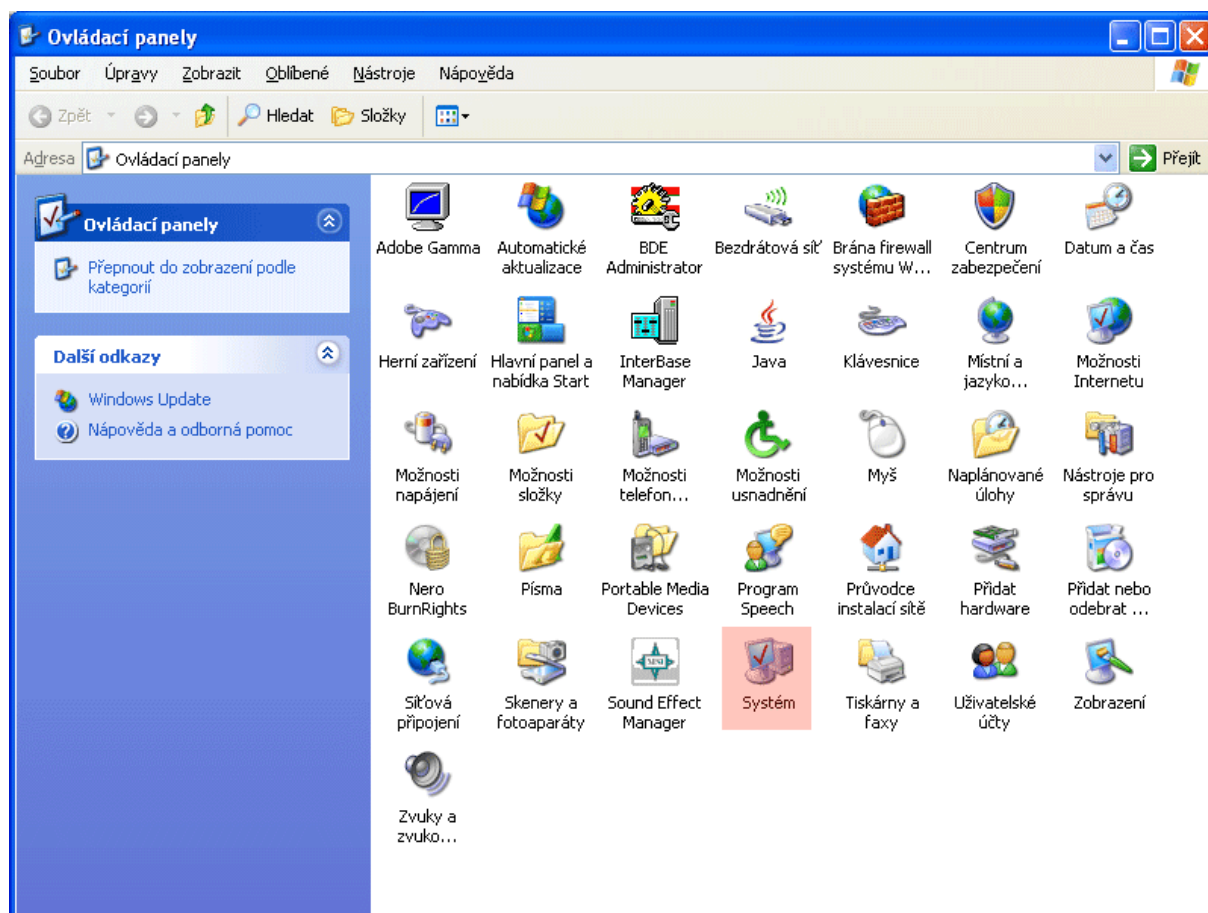
9. Now you have successfully installed the InterBase software on your computer. You can check on the control panel of your computer. Click twice on the **InterBase Manager** icon



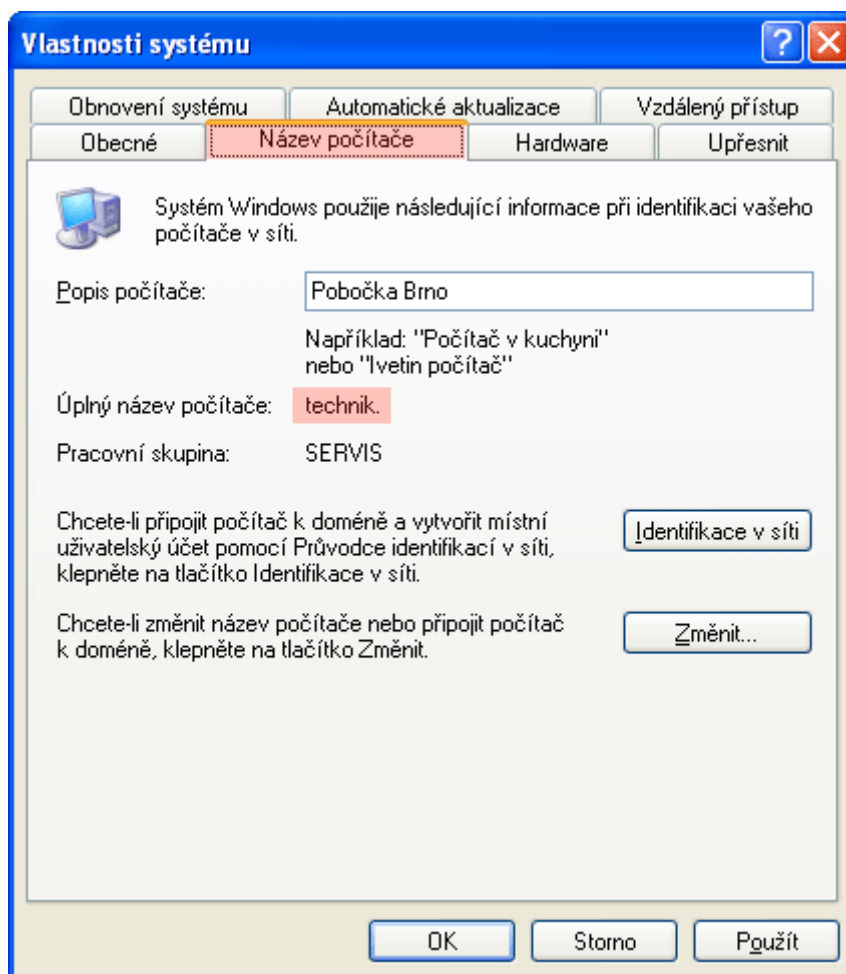
10. If you can see this window and especially the word **Running** what indicates that everything is okay (server is running). InterBase is set to run automatically with Windows so you don't need to run manually every time.



11. Now we need to know what the name of our computer is – please click twice on **System** in the control panel.

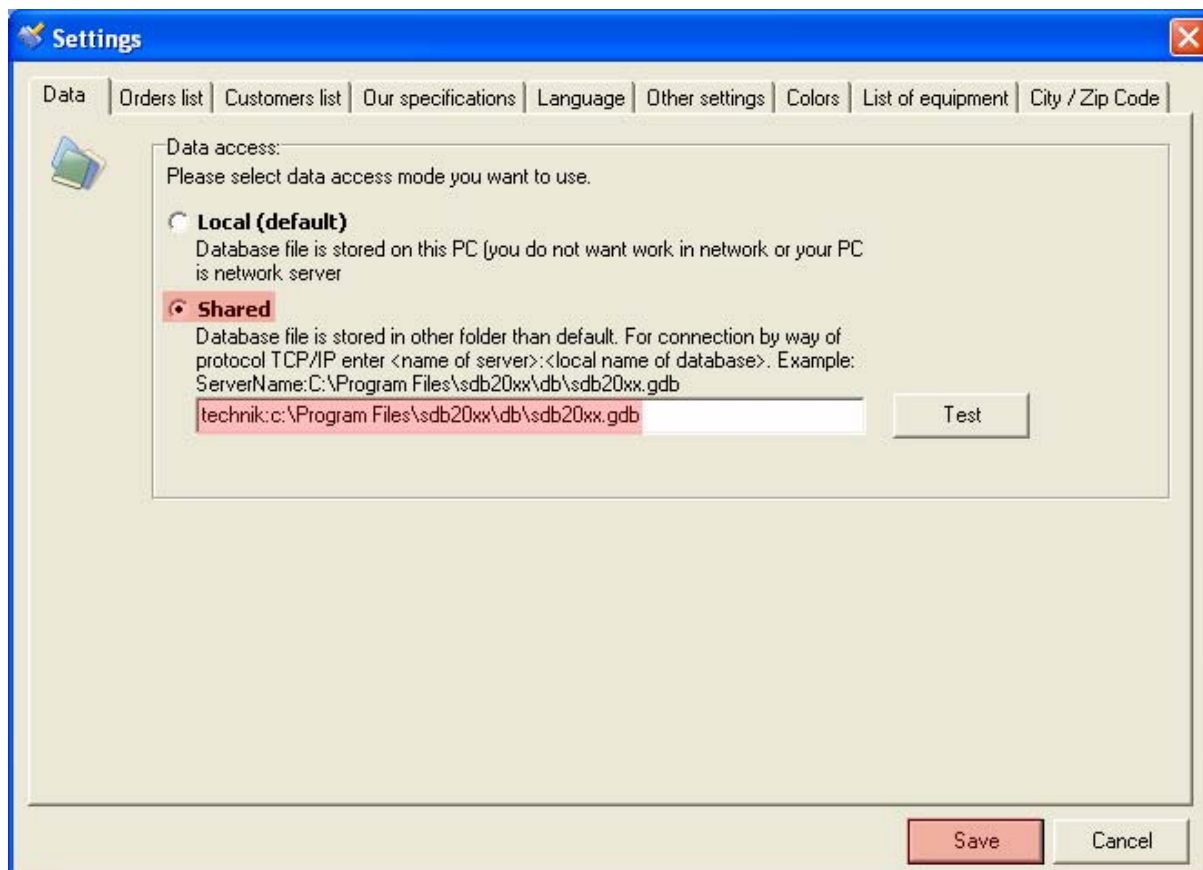


12. Go to tab **Název počítače** (Computer name) and you will see the name of your computer.

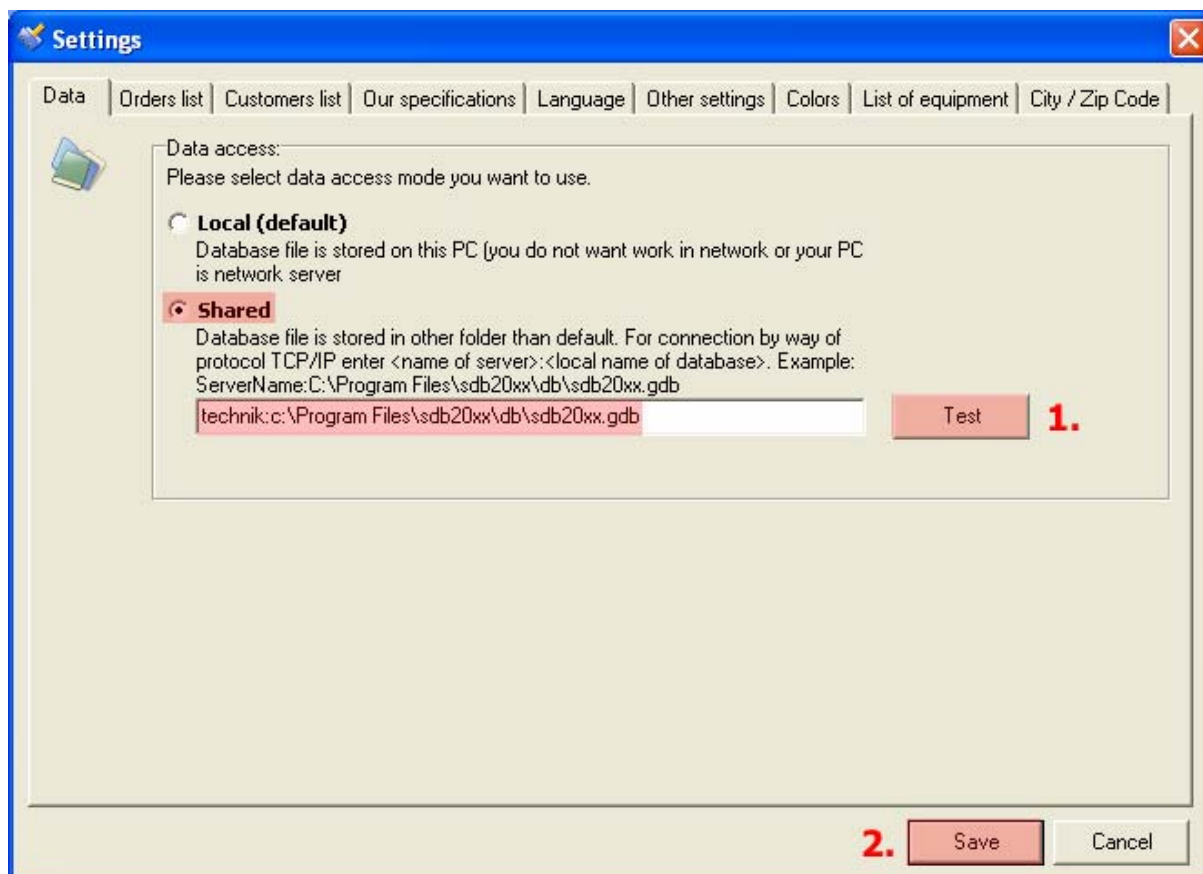


13. Run service database SDB 2008 and click on the tab **Tools > Settings > Data**. Do this on the host computer where the database is installed. In our example the name of our computer is **technik**, we selected **Shared** and entered **technik:c:\Program Files\sdb20xx\db\sdb20xx.gdb** into the field and click on the button **Save** button. This sets the route to database.

Attention: Remember you need to use your own data, your computer name and the name and location of the database **sdb20xx.gdb**. If local (default) is selected you can not use as a shared database on other computers.



14. To check the connection to the database right way. Just click on the **Test** button – this process can take in few minutes, depending on your local network.- If everything is okay then click on the **Save** button.



The database is now accessible by other computers – not only in local network but over internet– other settings may be required, these can be obtained from your server administrator.

If you need any help please feel free to contact us at e-mail: info@sdb20xx.com